




Road and Traffic Rules



SIGNS, SIGNALS and MARKINGS

[CLICK TOPICS FROM HERE](#)

A large red prohibition sign, consisting of a thick red circle with a horizontal bar across the middle, is centered in the background of the slide.

Regulatory Signs - Signs that inform road users of traffic laws and regulations which, if disregarded, will constitute an offense.

ROAD AND TRAFFIC RULES

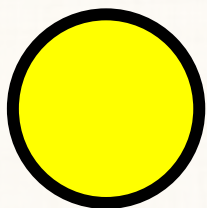
REGULATORY SIGNS



PROHIBITIVE



DIRECTIONAL SIGNS



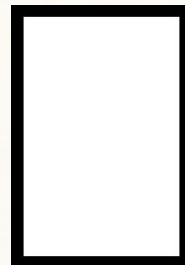
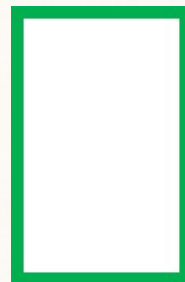
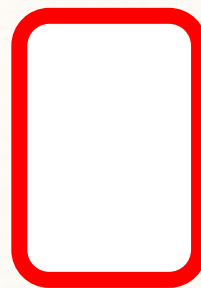
MISCELLANEOUS
SIGNS



YIELD SIGN



STOP SIGN



PARKING AND
GIVE WAY
SIGNS

ROAD AND TRAFFIC RULES



NO ENTRY FOR ALL VEHICLES

NO TURN SIGNS



NO CARS

NO JEEPNEYS

NO BUSES

NO TRUCKS



NO BICYCLES

NO MOTORCYCLES

NO TRICYCLES

NO VEHICLES
WITH TRAILER

NO ENTRY FOR SPECIFIC
VEHICLES

OTHER PROHIBITIVE SIGNS



ROAD AND TRAFFIC RULES



MAXIMUM SPEED
RESTRICTION



END OF SPEED
RESTRICTION



MINIMUM SPEED
RESTRICTION



pedestrians must use an overpass
or pedestrian crossing.



ROAD AND TRAFFIC RULES

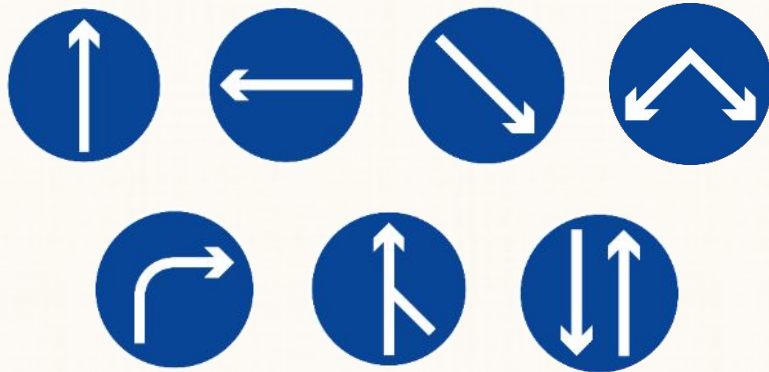


In the absence of road signs for speed restrictions, the provisions of RA 4136 Section 35 (b) shall be followed

MAXIMUM ALLOWABLE SPEEDS UNDER RA 4136	Passengers Cars and Motorcycle	Motor trucks and buses
1. Highways with no blind corners and no residential or commercial structures	80 km. per hour	50 km. per hour
2. Boulevards designated as “through street” with no blind corners	40 km. per hour	30 km. per hour
3. City or municipal streets	30 km. per hour	30 km. per hour
4. Crowded streets and intersections	20 km. per hour	20 km. per hour

Speeding does not apply to the following:

- 1) A physician or his driver;
- 2) The driver of a hospital ambulance;
- 3) Any driver bringing a wounded or sick person;
- 4) The driver of a motor vehicle belonging to the Armed Forces in times of insurrection, riot or invasion;
- 5) The driver of a vehicle in pursuit of a criminal;
- 6) A law-enforcement officer in pursuit of violator of traffic laws; and
- 7) The fire truck driver.



DIRECTION SIGNS - These signs indicate the only direction(s) in which the motorist is obliged to follow.

PRIORITY SIGNS



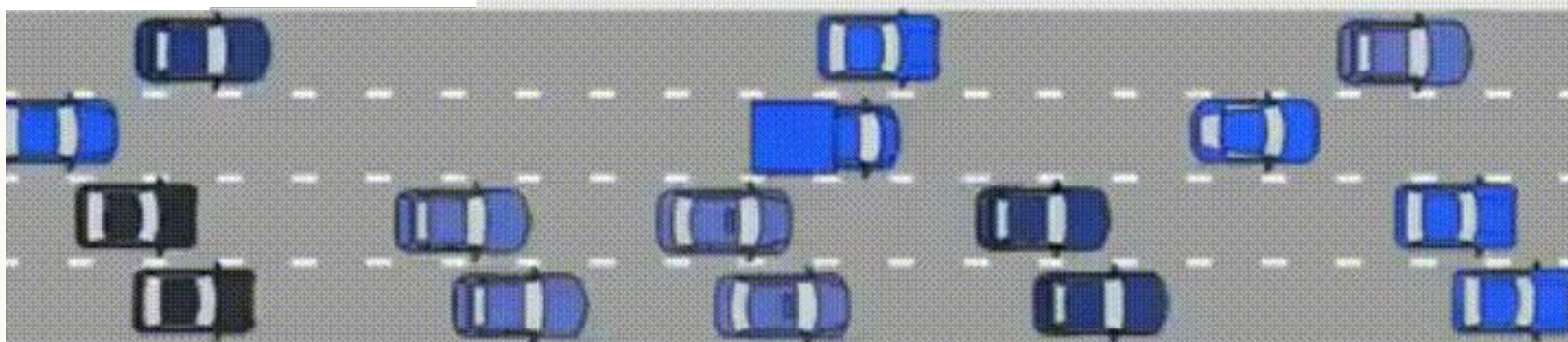
STOP SIGN- driver must stop at designated STOP LINE. NO PARKING within 6 meters.



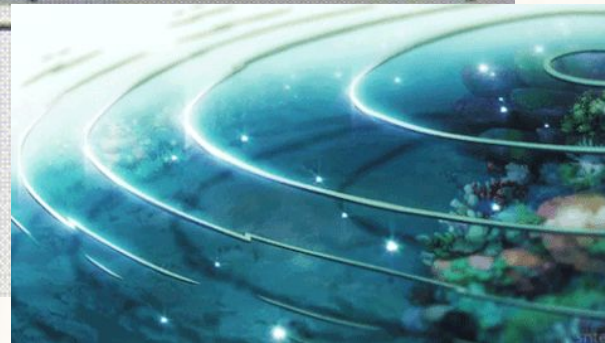
GIVE WAY SIGN- yield to the vehicles on right side of intersection.

ROAD AND TRAFFIC RULES

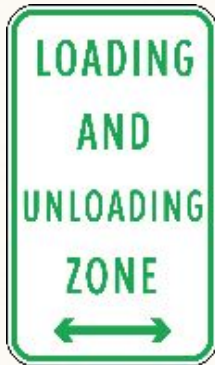
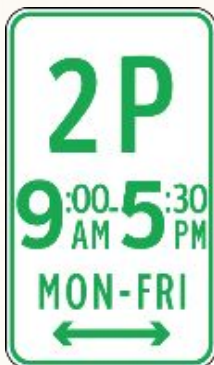
RIPPLE EFFECT



A simple obstruction creates unmeasurable impact to the flow of traffic. How much more if you stop at a non-stopping zone?



ROAD AND TRAFFIC RULES



ALLOWABLE PARKING AND LOADING ZONE AT A GIVEN TIME AND PLACE



NO PARKING FIRE HYDRANT - no parking within 4 meters of the fire hydrant

NO LOADING /UNLOADING WITHIN RED-PAINTED CURB

NO PARKING SIGNS



ROAD AND TRAFFIC RULES



BUS-PUJ STOP ZONE-
parking is not allowed.



BUS STOP ZONE-
parking is not allowed.



PUJ STOP ZONE-
parking is not allowed.



**NO PARKING:
TOW-AWAY ZONE-**
parked vehicle will be
towed.



**NO STOPPING OR
PARKING ANYTIME WITHIN
THE YELLOW BOX**

**RIGHT TURNER CROSS AT BROKEN
LINES** - vehicles from the left lane may
cross the broken line to turn right within
the BUS/PUJ zone.

**RIGHT
TURNER
CROSS AT
BROKEN
LINES**

No Parking anytime from
Monday to Friday.



ROAD AND TRAFFIC RULES



**NO ENTRY FOR
VEHICLES WITH GROSS
AXLE LOAD OF MORE
THAN 2 TONNES**



**NO ENTRY FOR
VEHICLES WITH MORE
THAN 2 METERS OF
WIDTH**



**NO ENTRY FOR
VEHICLES WITH GROSS
VEHICLE MASS OF
MORE THAN 5 TONNES**



**NO ENTRY FOR
VEHICLES WITH MORE
THAN 3.5 METERS IN
HEIGHT**



**NO ENTRY FOR
VEHICLES WITH MORE
THAN 10 METERS IN
LENGTH**

ROAD AND TRAFFIC RULES



USE SEAT BELT sign is used pursuant to R.A. No. 8750, the Seat Belt Law.



**BE AWARE OF
PEDESTRIAN OR
CHILDREN CROSSING**



**BE AWARE OF BIKERS
OR CYCLIST**

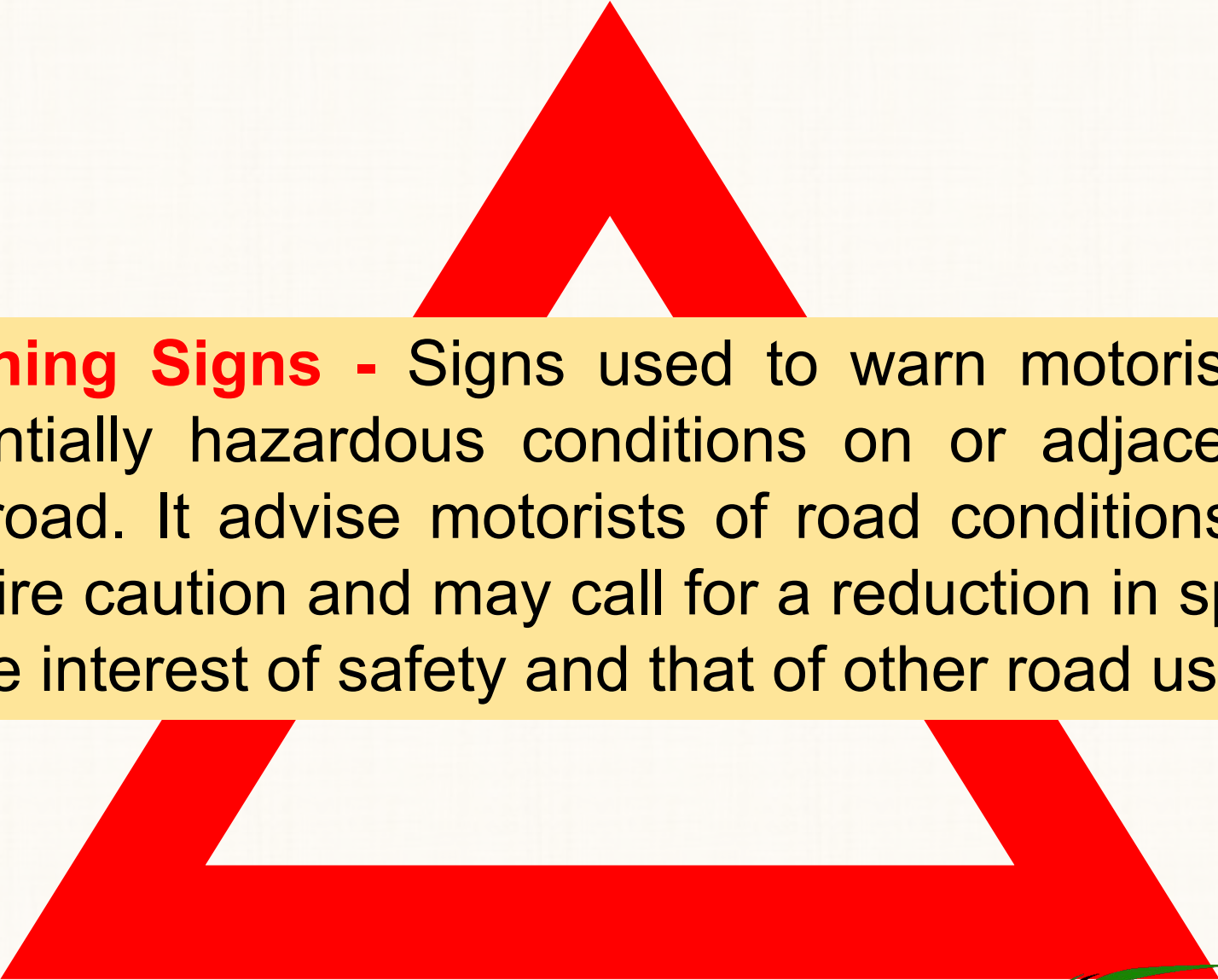


**BE AWARE OF
PWD CROSSING**

**NO BLOWING
OF HORNS**



ROAD AND TRAFFIC RULES

A large red warning sign in the shape of an equilateral triangle with a white border, serving as a background for the text.

Warning Signs - Signs used to warn motorists of potentially hazardous conditions on or adjacent to the road. It advise motorists of road conditions that require caution and may call for a reduction in speed, in the interest of safety and that of other road users.

ROAD AND TRAFFIC RULES

TYPES OF ROAD CURVE AHEAD



SHARP TURN



DOUBLE SHARP
TURN



CURVE



DOUBLE CURVE



WINDING ROAD



HAIRPIN BEND

APPROACHING INTERSECTION OR JUNCTION



T-Junction
ahead



Y-Junction
ahead



APPROACH TO
INTERSECTION
SIDE ROAD



MERGING TRAFFIC



Roundabout ahead
(Rotunda)



APPROACH TO
INTERSECTION



SIDE ROAD JUNCTION AHEAD

ROAD AND TRAFFIC RULES

ADVANCE WARNING OR TRAFFIC CONTROL DEVICE SIGNS



TRAFFIC LIGHTS AHEAD- driver must not park or stop within six (6) meters of this sign as it reduces visibility for other drivers.



STOP SIGN AHEAD



GIVE WAY SIGN AHEAD

ROAD WIDTH SIGNS



ROAD NARROWS AHEAD



NARROW BRIDGE AHEAD



DIVIDED ROAD AHEAD



END of DIVIDED ROAD AHEAD

SALUBUNGAN

ROAD OBSTACLE SIGNS



**OPENING
BRIDGE AHEAD**



**UNEVEN ROAD
AHEAD**



HUMP AHEAD



**DOWNHILL
SIGN**



UPHILL SIGN



**LOW-FLYING
AIRPLANE ZONE**



**SPILL WAY
SIGN**



**FLOOD-PRONE
AREA**



**LANDSLIDE-PR
ONE AREA**



**ANIMAL CROSSING
AHEAD**



SLIPPERY ROAD



ROAD AND TRAFFIC RULES

OTHER WARNING SIGNS



**SLOW DOWN
PED XING
AHEAD**

**PEDESTRIANS CROSSING
AHEAD**



**BE AWARE AND
STOP FOR PWD
CROSSING AHEAD**



**BE AWARE AND STOP FOR
CHILDREN CROSSING AHEAD**

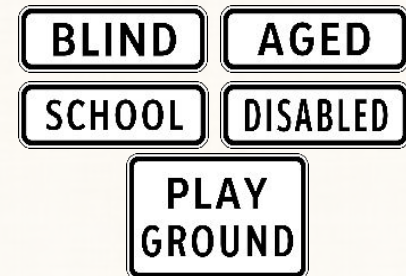
**CROSS
ONLY
AT
PED
XING**

**ADVICE TO PEDESTRIANS
TO CROSS AT DESIGNATED
AREAS**

MOSTLY WITH SUPPLEMENTARY SIGNS



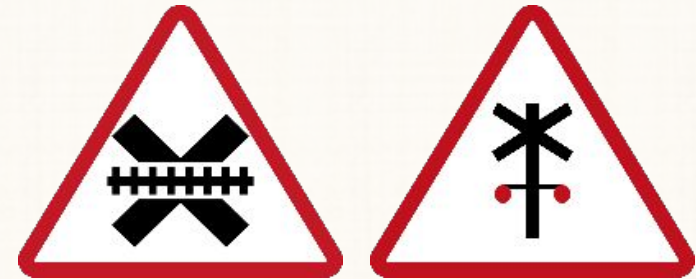
**BE AWARE AND SLOW DOWN
ON BIKE LANE AHEAD**



RAILROAD CROSSING SIGNS



RAILROAD CROSSING
VEHICLES MUST STOP OR
GIVE THE RIGHT OF WAY AND
POSITIONED IN AN AREA
THAT ARE EASILY SEEN



RAILROAD CROSSING
ADVANCE WARNING

ROAD WORK AHEAD



ROAD WORK OR ROAD
CONSTRUCTION AHEAD



ADDITIONAL SIGN ON
ROAD WORKS AHEAD

GUIDE OR INFORMATIVE SIGNS

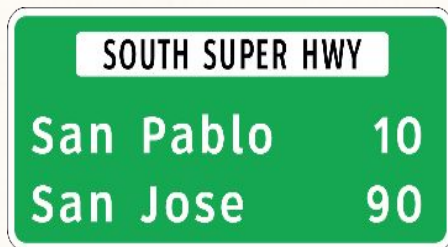
Informs and advice road users about the directions, distances, routes, the location of services for road users, and point of interest.

ROAD AND TRAFFIC RULES



ADVANCE DIRECTION SIGNS -

These signs indicate the only direction(s) in which the motorist is obliged to follow.



REASSURANCE DIRECTION SIGNS

- Approximate distance of a particular exit



INTERSECTION DIRECTION SIGNS - Visible in less than 1 kilometer before an intersection.



FINGER BOARD & DIRECTION SIGNS

- Provides direction to towns, tourist spots, geographic interests at less important intersections

ROAD AND TRAFFIC RULES

NATIONAL MUSEUM
TURN RIGHT
300 m

SCENIC LOOKOUT
300 m
ON RIGHT

TOURIST INFORMATION, DISTANCE AND
DIRECTION SIGNS

BONIFACIO DR

MABINI ST

STREET NAME SIGNS

- Informs the road users the names of roads and streets they are passing or entering.

TOWN NAMES & GEOGRAPHICAL FEATURES SIGNS

- Signs that conveys the general information of interest, such as geographical locations.

TAFT AVE
1 - 350 →

BONIFACIO DR
1 - 350

SERVICE SIGNS



Hospital



First Aid
Ambulance Hospital



Telephone



Gasoline Station



Parking Area



Accommodation
Hotel, Motel



Caravan Site



Camping Area



Information Center



Refreshment



Restaurant, Cafes



Rest Area, Picnic
Ground



Directions of Airport



Truck Parking



Rest Rooms



Disabled
Service

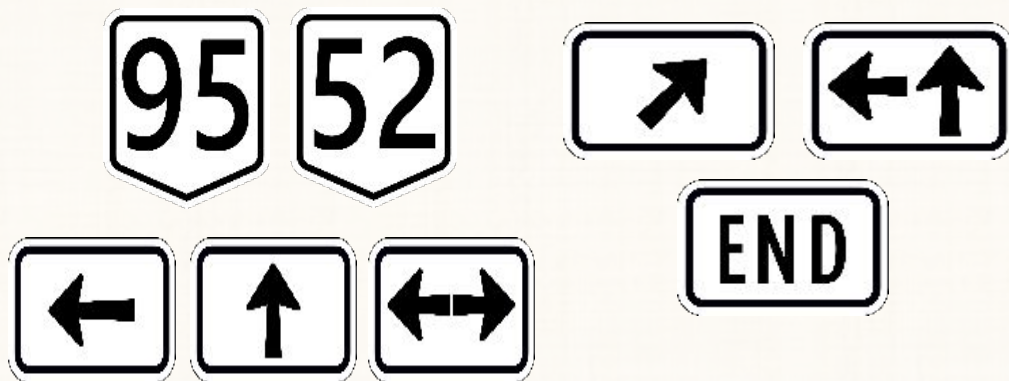


Litter Bin

ROAD AND TRAFFIC RULES

ROUTE MARKERS - The identification and general direction of arterial roads and national highways that have significance by showing the number and direction of the route.

Philippine Highway Network



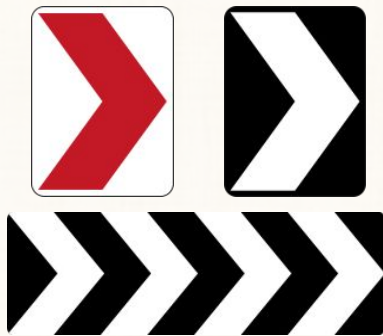
Asian Highway Route Marker



In the **Philippines** distance is measured from the Zero **Kilometer Post** in each Province which should be somewhere near the Provincial Building. In Luzon distance is measured between each Provincial Zero **KM Post** and the Zero **KM Post** in Luneta Park, Manila.

HAZARD MARKERS

These are used to emphasize to the approaching driver a marked change in the direction of travel and the presence of an obstruction.



ONE-WAY HAZARD MARKERS
indicate to the approaching driver the direction to be followed if the marker appears in the driving path.



CHEVRON SIGNS
guide the drivers through a change in horizontal alignment of the road.



TWO-WAY HAZARD MARKERS
used where it is necessary to define an exposed obstruction on a traffic island nose at which traffic may pass to either side.



OBSTRUCTION MARKERS

road closure ahead



SIGN USED ON A WIDE COLUMN OF AN OVERPASS STRUCTURE, MEDIAN ISLAND

HAZARD MARKERS



WIDTH MARKERS -
narrowing vehicle width
clearance designed and
placed near the foot of
the bridge approach

ROAD AND TRAFFIC RULES

ROADWORKS SIGNS

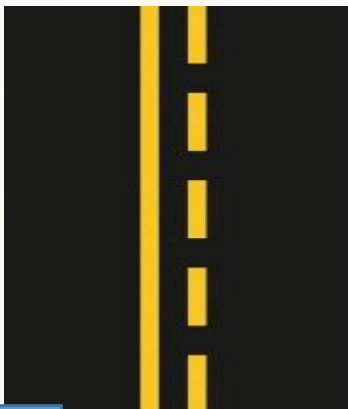


PAVEMENT MARKINGS

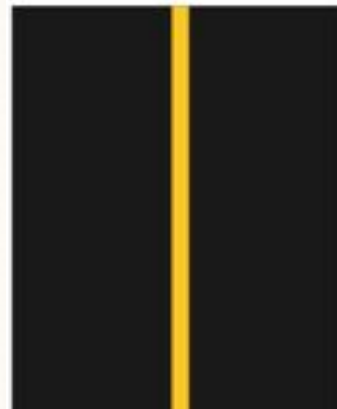


DOUBLE SOLID YELLOW/ WHITE LINES
overtaking or crossing is prohibited

BROKEN AND SOLID YELLOW LINES-
passing is permitted on the side of the broken line but not on side of solid line.

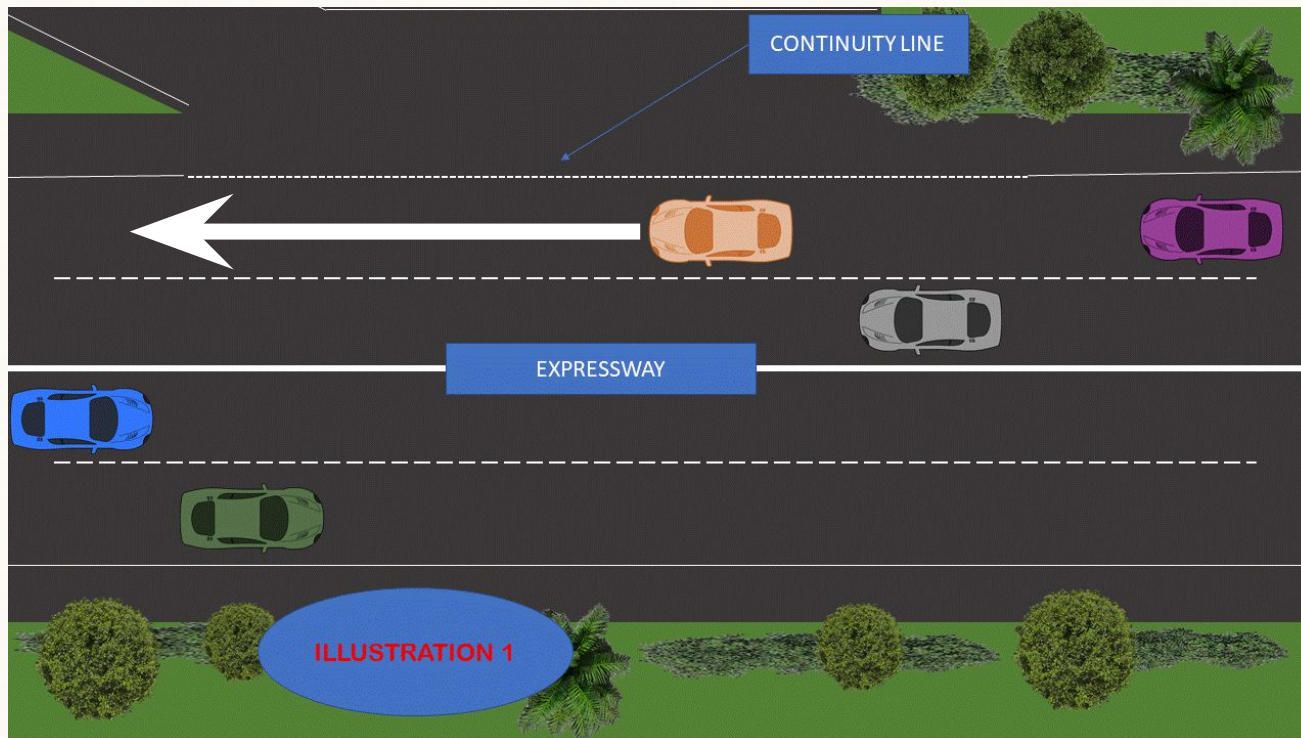


SINGLE SOLID YELLOW/WHITE LINE -
overtaking from both directions is prohibited.
crossing movement is allowed.



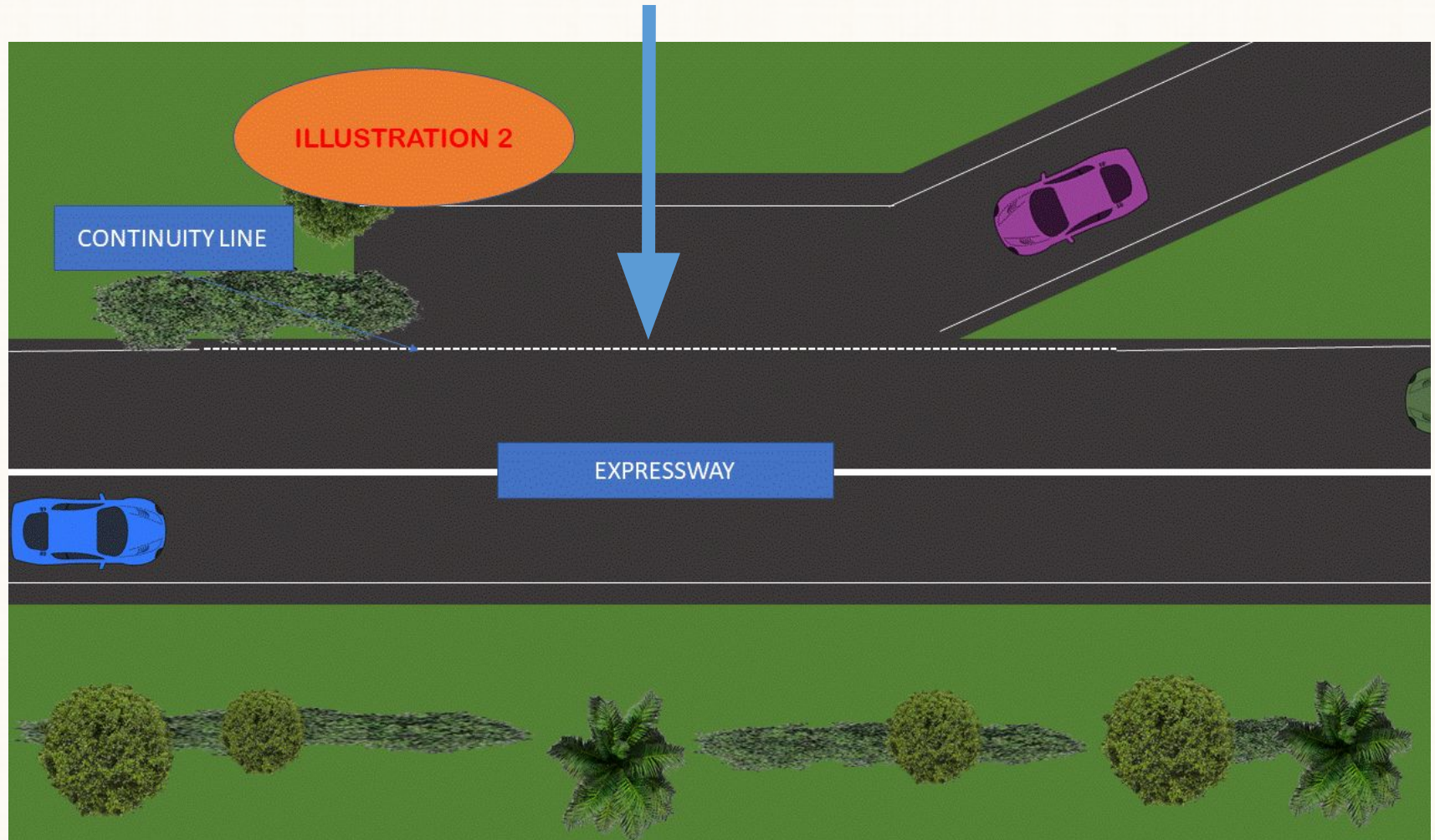
ROAD AND TRAFFIC RULES

CONTINUITY LINE generally means that the lane you are in is about to end. Continuity lines on your right mean your lane will continue unaffected. Continuity line on your left means you are approaching an obstruction or about to enter a different direction.

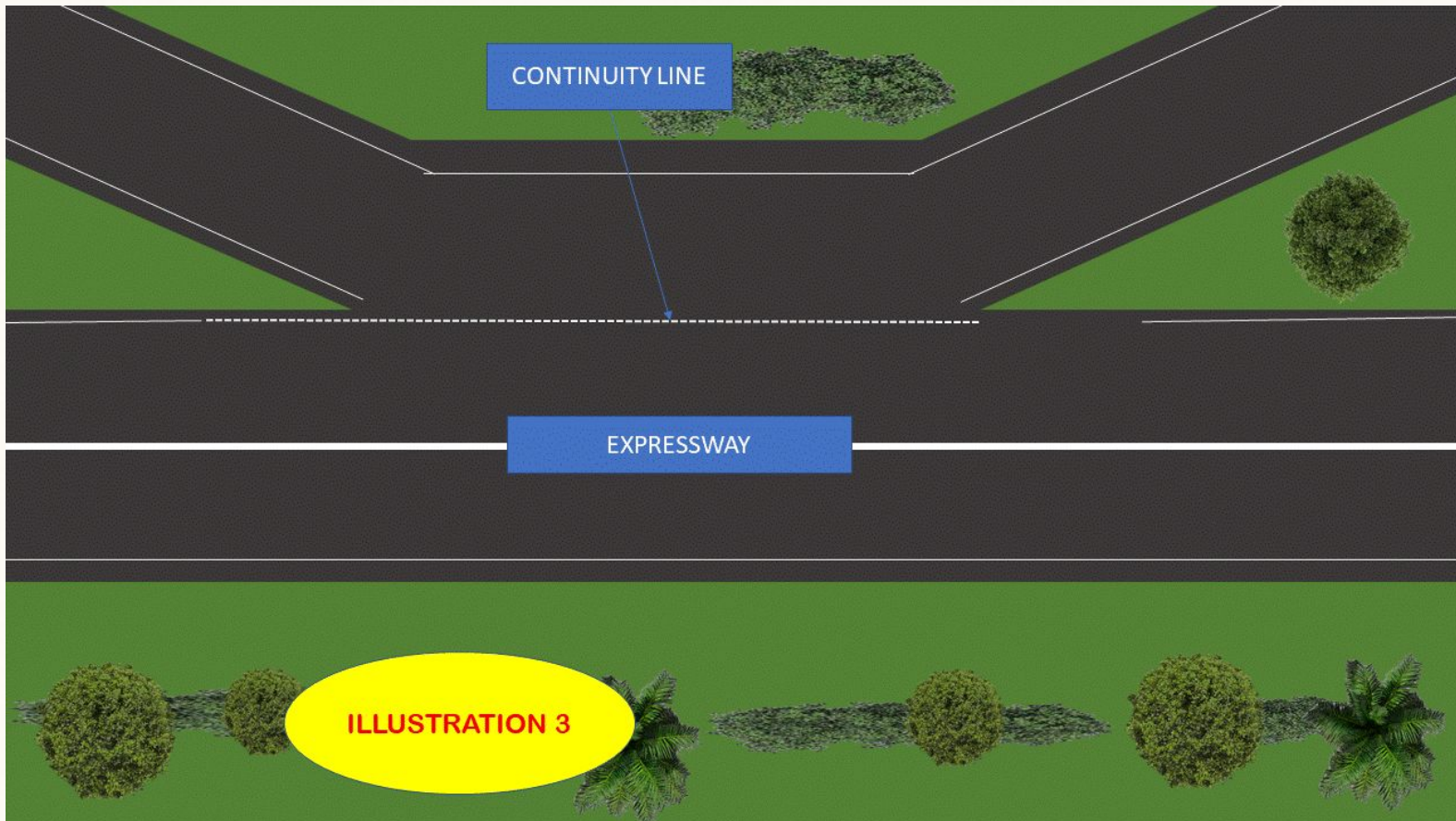


ROAD AND TRAFFIC RULES

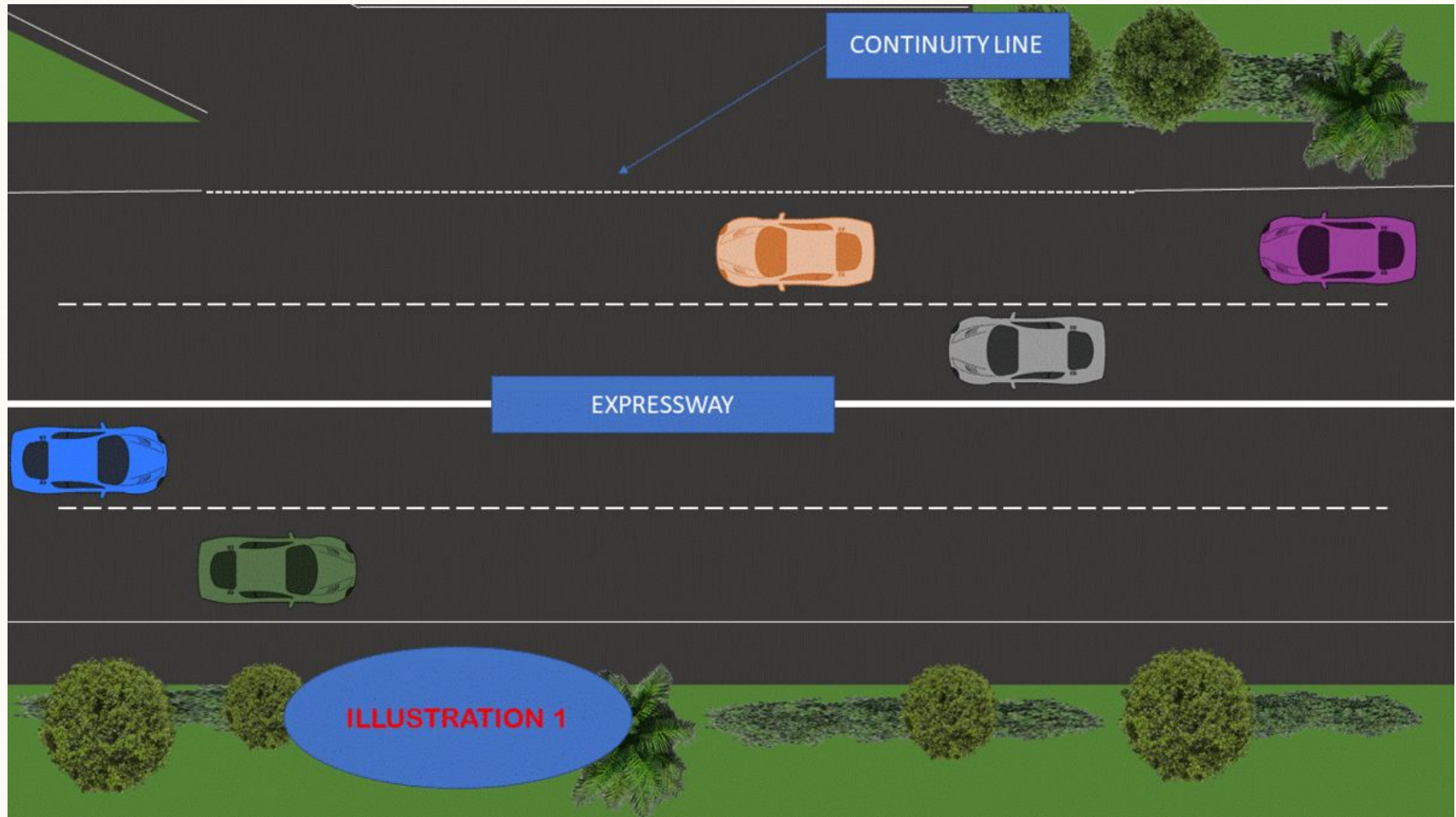
What is the correct speed when merging into the expressway?



ROAD AND TRAFFIC RULES



ROAD AND TRAFFIC RULES





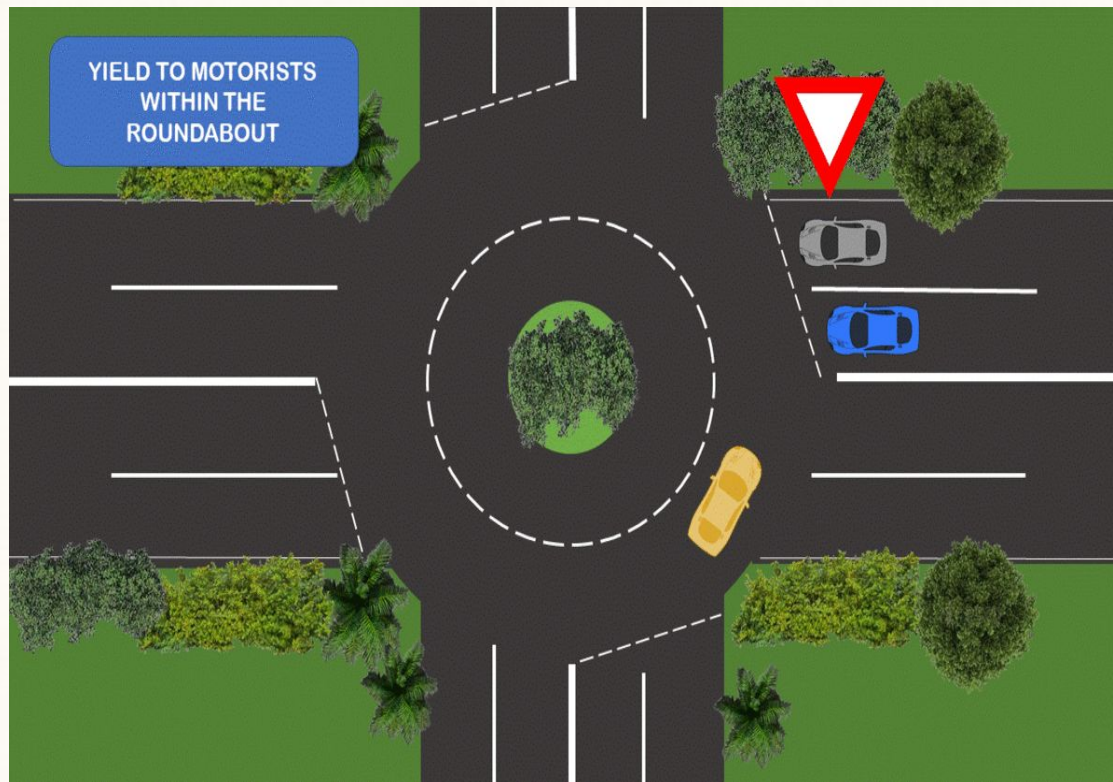
TRANSITION LINES are used to guide traffic safely past obstructions on roadways such as islands, median strips, bridge piers or indicate changes in the width of the traveled portion of the roadway and an increase or reduction in traffic lanes.

GIVE WAY or HOLDING LINES are markings consisting of a two adjacent broken white lines across the carriageway at which drivers must give way to all traffic in accordance with the standard sign.

ROUNDBABOUT HOLDING LINES
vehicle within the rotunda have the right-of-way over vehicles which are just about to enter.



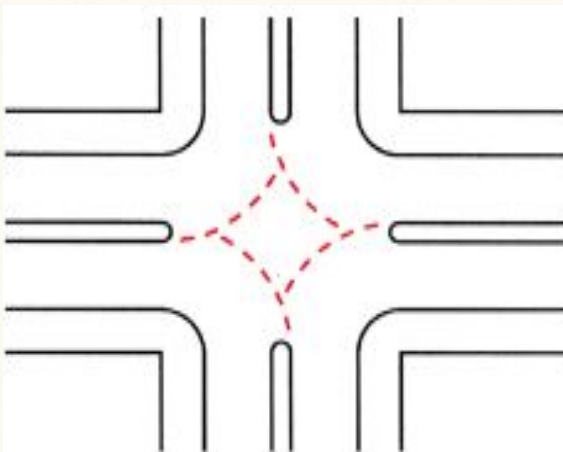
ROUNDAABOUT HOLDING LINES vehicle within the rotunda have the right-of-way over vehicles which are just about to enter.



ROAD AND TRAFFIC RULES



**NONSIGNALIZED
PEDESTRIAN LANE**



TURN LINE is used to guide vehicles through a turning movement at intersections.



PARKING BAY is used to park but take note of PWD parking spaces



SIGNALIZED



**LOADING AND UNLOADING
BAY LANE LINE** is an unbroken white line used to indicate the proper location of loading and unloading zone of public utility vehicles preferably with parking restriction.

ROAD AND TRAFFIC RULES



BUS AND PUJ LANE is an unbroken yellow line used to separate other vehicles from buses and PUJ's and supplemented by raised pavement markers on concrete pavements.

CHEVRON



APPROACH MARKINGS TO ISLANDS AND OBSTRUCTIONS



RUMBLE STRIPS



What are the meanings of these colored curbs?



NO PARKING



**NO LOADING
/ UNLOADING**

ROAD AND TRAFFIC RULES



**RAILROAD
CROSSING AHEAD**



MARKINGS ON CURBS



Objects within the Roadway

OBJECTS ADJACENT TO THE ROADWAY



ROAD AND TRAFFIC RULES



MOTORCYCLE LANES are designed to prevent frequent changing of lanes. Riders are not allowed to use other lanes unless pulling out from the main road.

FOR BICYCLES ONLY this is painted on the pavement by a solid line along either side of street.



PAVEMENT ARROWS are used for lane control and in white color.

SPEED LIMIT AT 60KPH speed restriction can also be seen on pavement markings that must be strictly followed.



Substitution of lane lines



Cat's Eye - the cat's eye or road stud is a retroreflective safety device used in road markings to separate traffic.

TRAFFIC LIGHTS



- a **RED SIGNAL** means you must bring your vehicle to a Stop at a clearly marked line.
- **FLASHING RED SIGNAL** means bring your vehicle to a Stop and proceed only when it is safe.



- a **YELLOW SIGNAL** indicates that the Red Signal is about to appear.
- **FLASHING YELLOW SIGNAL** - when a flashing yellow signal is incorporated with an overhead beacon or a beacon located directly above a warning sign, it advises you to proceed with caution.



- a **GREEN SIGNAL** means you proceed, provided you yield to pedestrians and traffic lawfully using the intersection.
- **FLASHING GREEN SIGNAL** – Proceed with caution

PROPER HAND SIGNALS



Right Turn



Left Turn



Stop

DRIVER'S BASIC
HAND DESTINATION
SIGNALS



Used to control pedestrian traffic at intersections where there is conflict between vehicle and pedestrian movement. While these pedestrians are crossing the roadway, they have the right-of-way over all vehicles.



COPYRIGHTS



NOTICE

ALL PICTURES PRESENTED WERE TAKEN and
DOWNLOADED FROM THE INTERNET WITH NO
INTENTION OF CLAIMING THEM.
ALL PICTURES ARE FOR EDUCATIONAL PURPOSES
ONLY. NO COPYRIGHT INFRINGEMENT.



